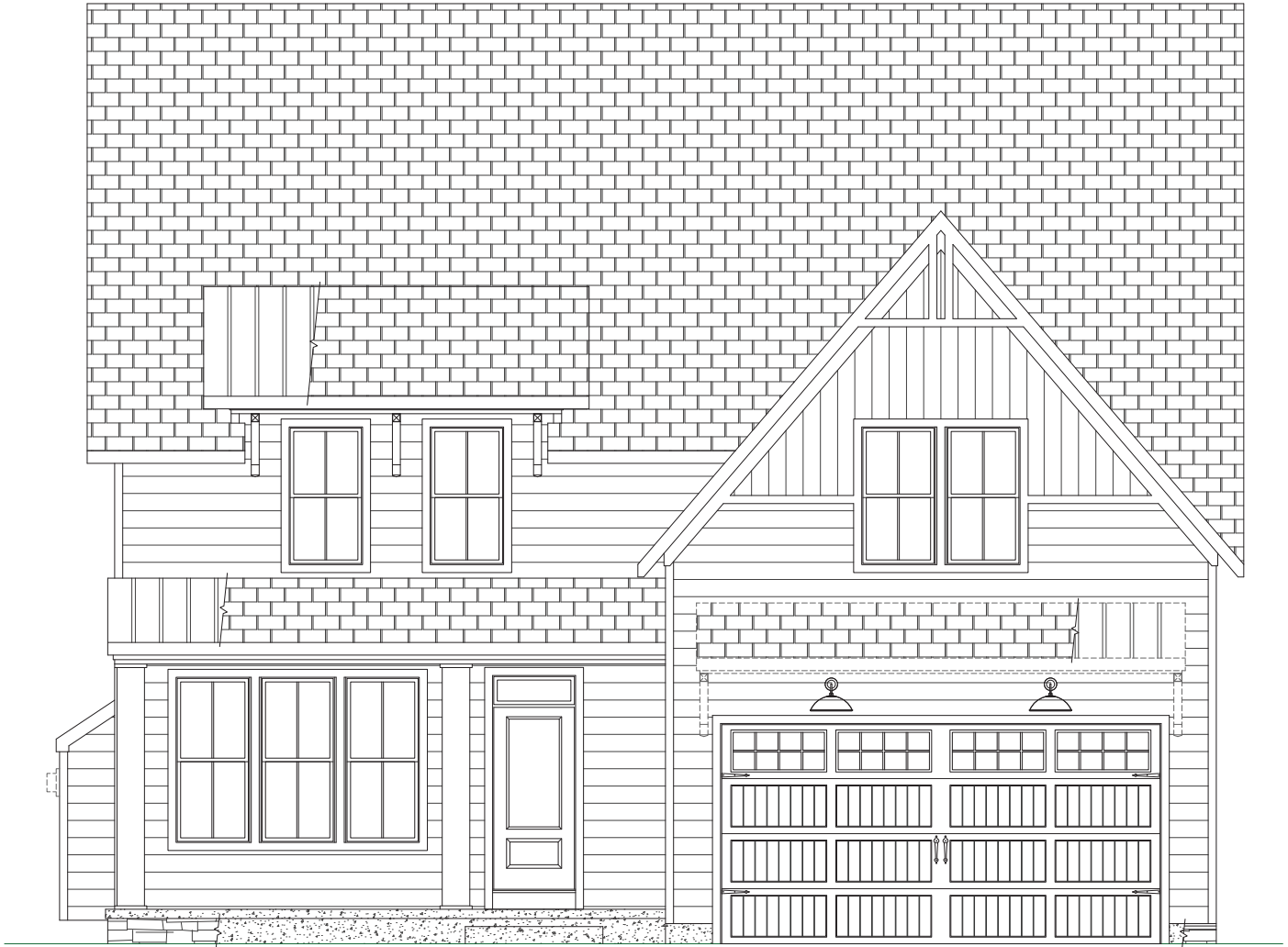




"Handcrafted with Extraordinary Detail"



## THE ARLINGTON FARMHOUSE

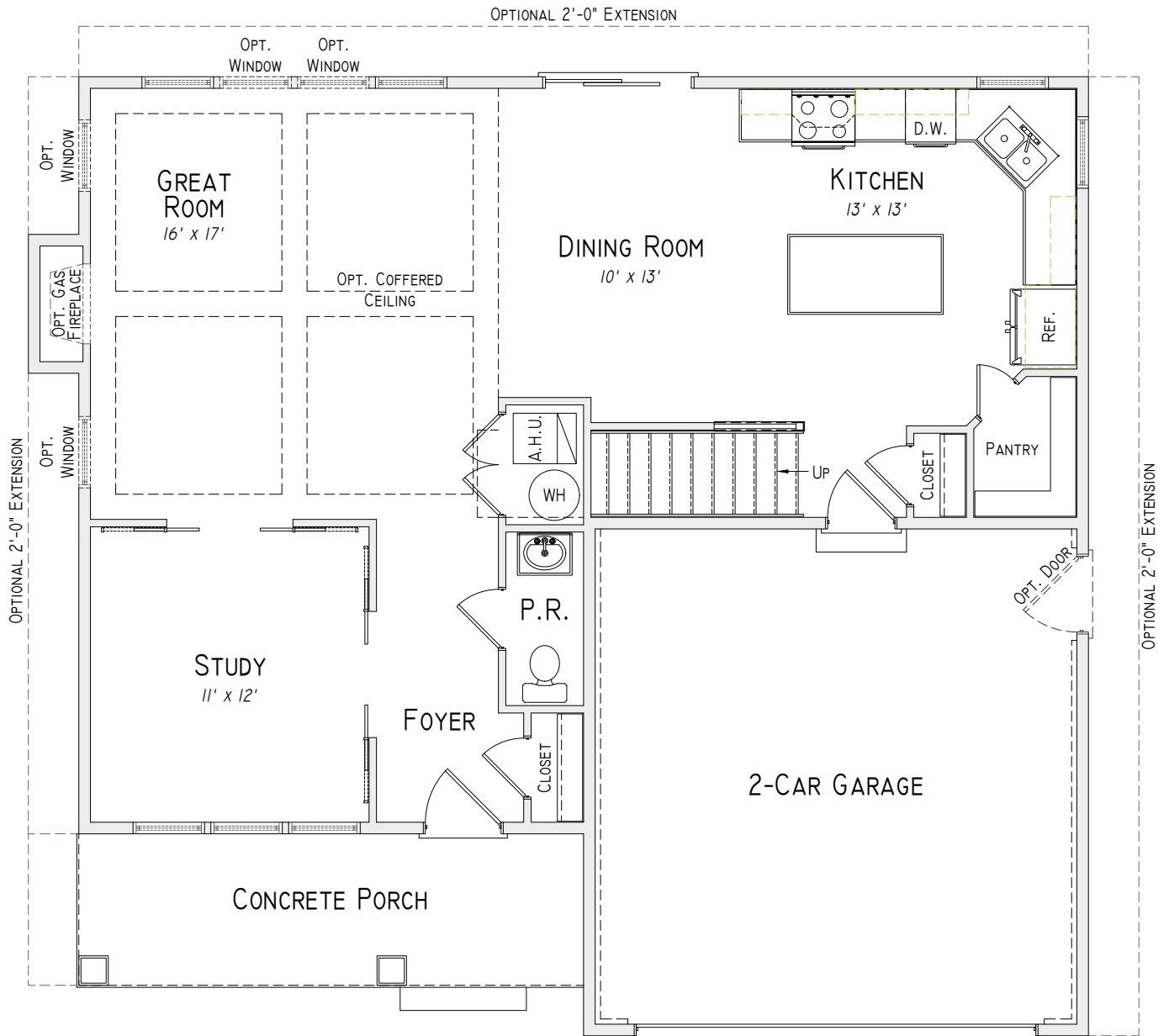
*Four Bedroom, 2 ½-Bath, 2-Car Garage  
(Show w/ Optional Stone to Grade and Standing Seam Metal Roof)*

2025-2-9

[GreenspringHomes.net](http://GreenspringHomes.net)



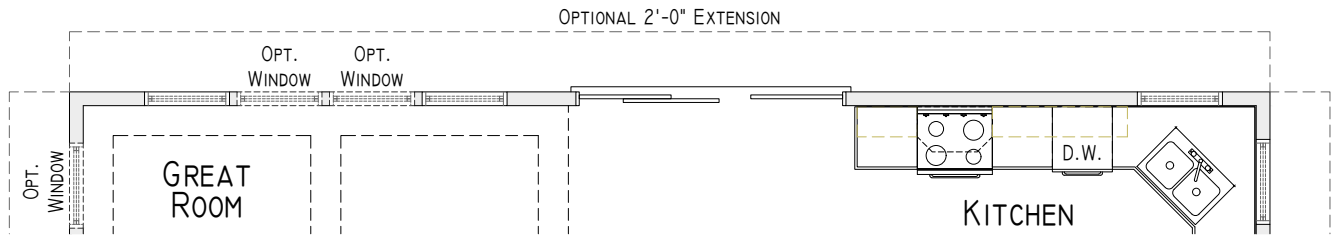
MHBR #6375



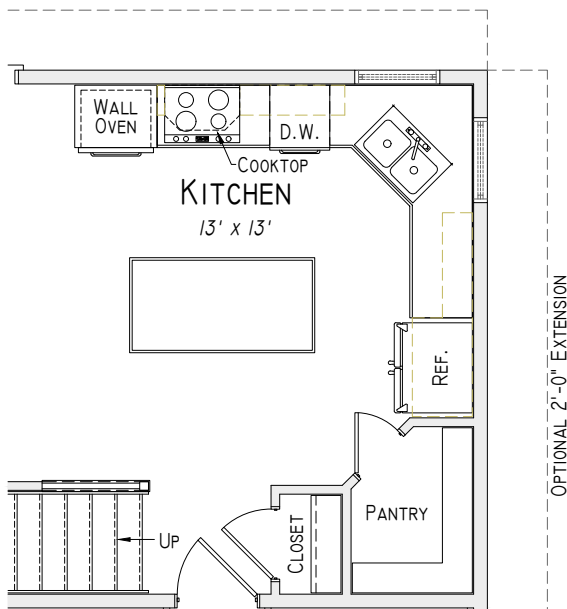
*First Floor Plan*

Details and dimensions shown on the floor plans are approximate, not to scale and subject to change. Illustrations are artist concepts and may vary in detail from floor plans and specifications.

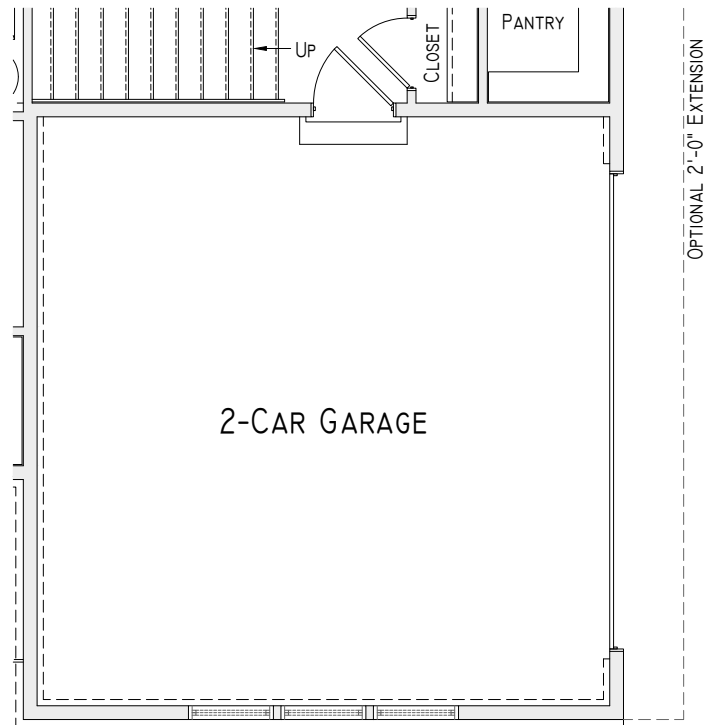




*First Floor Plan w/ Optional 9'-0"  
Triple Panel Sliding Glass Door*

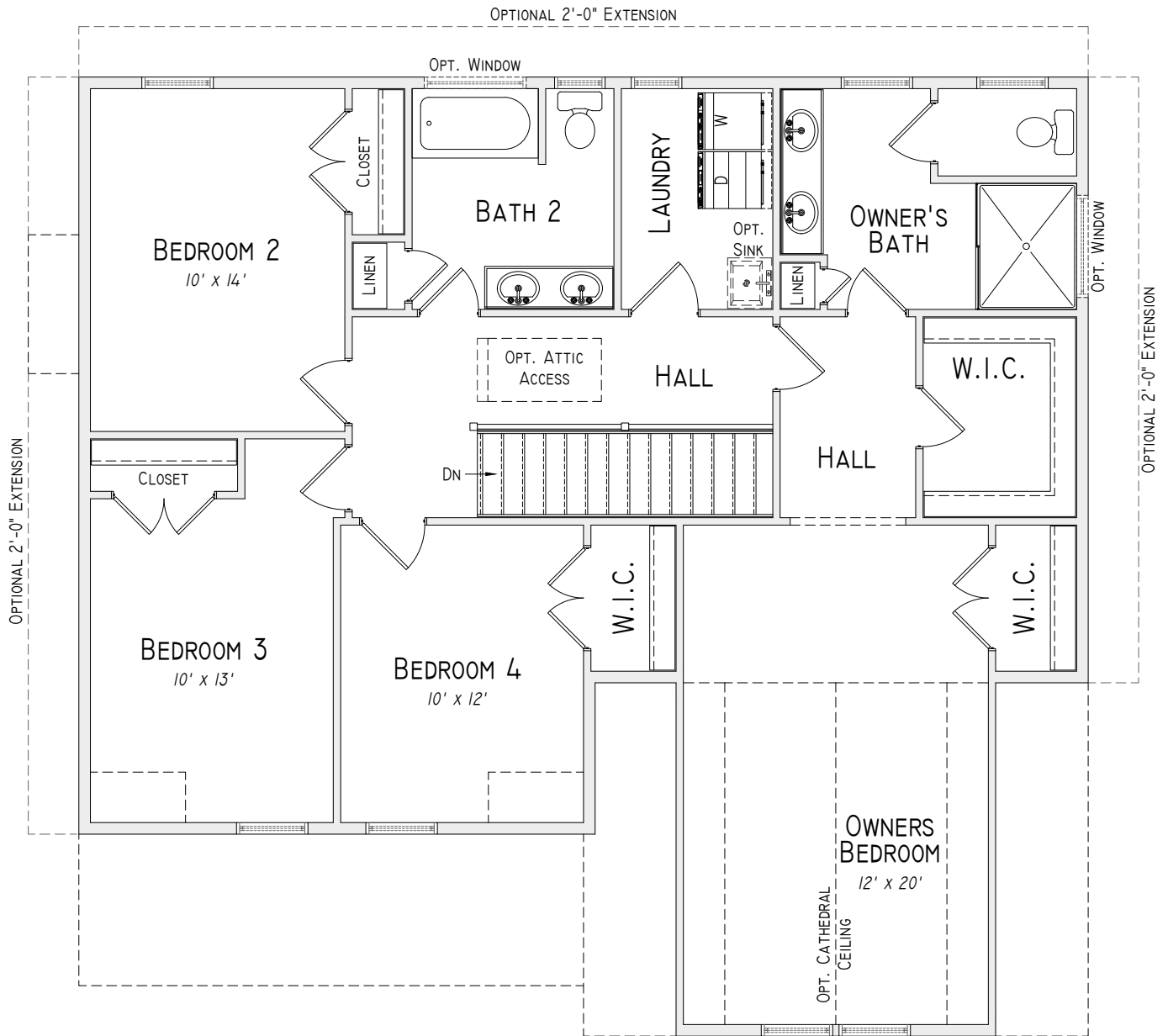


*First Floor Plan w/  
Optional Gourmet Kitchen*



*First Floor Plan w/  
Optional Side Load Garage*

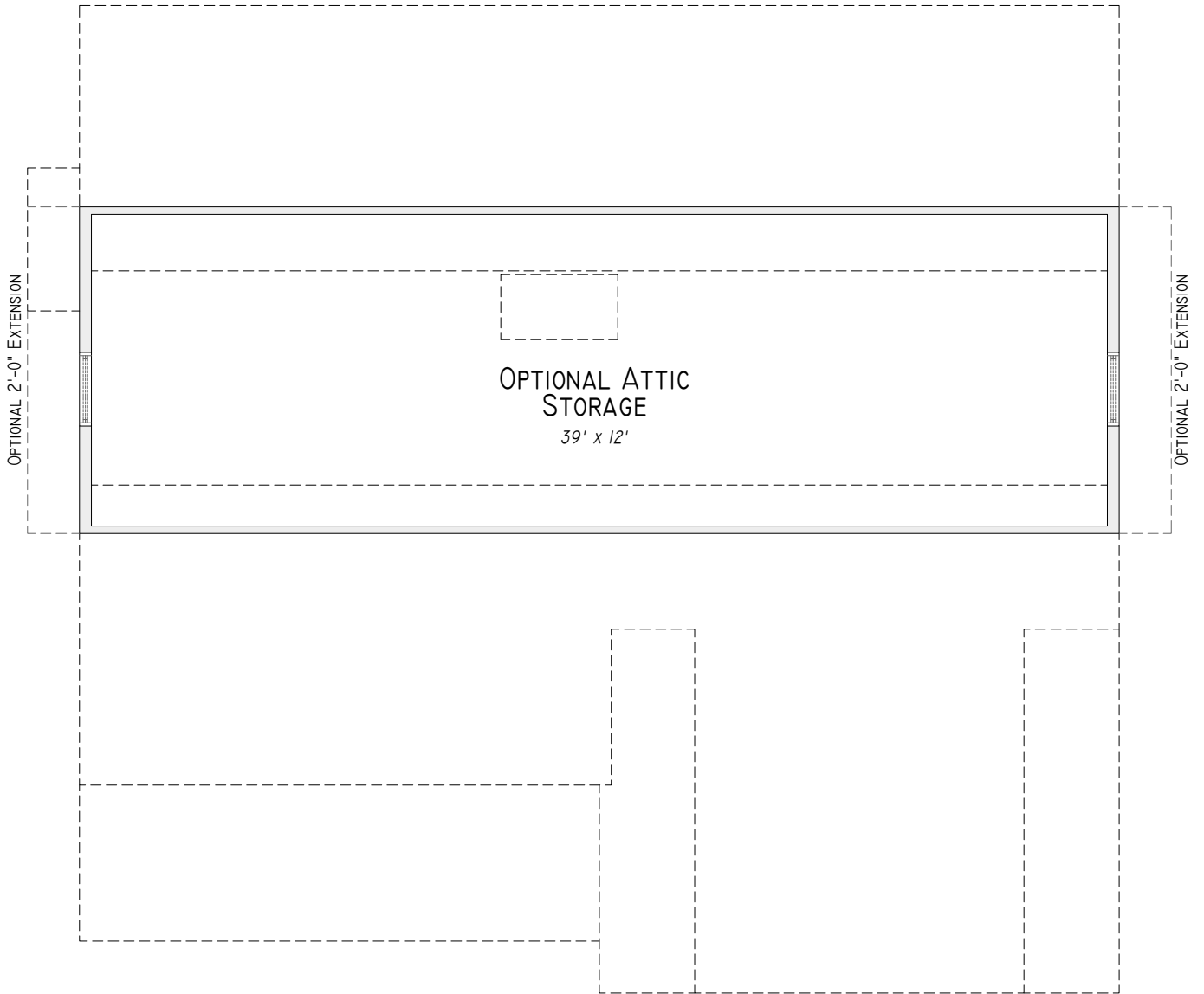
Details and dimensions shown on the floor plans are approximate, not to scale and subject to change. Illustrations are artist concepts and may vary in detail from floor plans and specifications.



*Second Floor Plan*

Details and dimensions shown on the floor plans are approximate, not to scale and subject to change. Illustrations are artist concepts and may vary in detail from floor plans and specifications.





*Optional Attic Storage Floor Plan*

Details and dimensions shown on the floor plans are approximate, not to scale and subject to change. Illustrations are artist concepts and may vary in detail from floor plans and specifications.

