

Greenspring Homes

"Handcrafted with Extraordinary Detail"



THE ARLINGTON FARMHOUSE

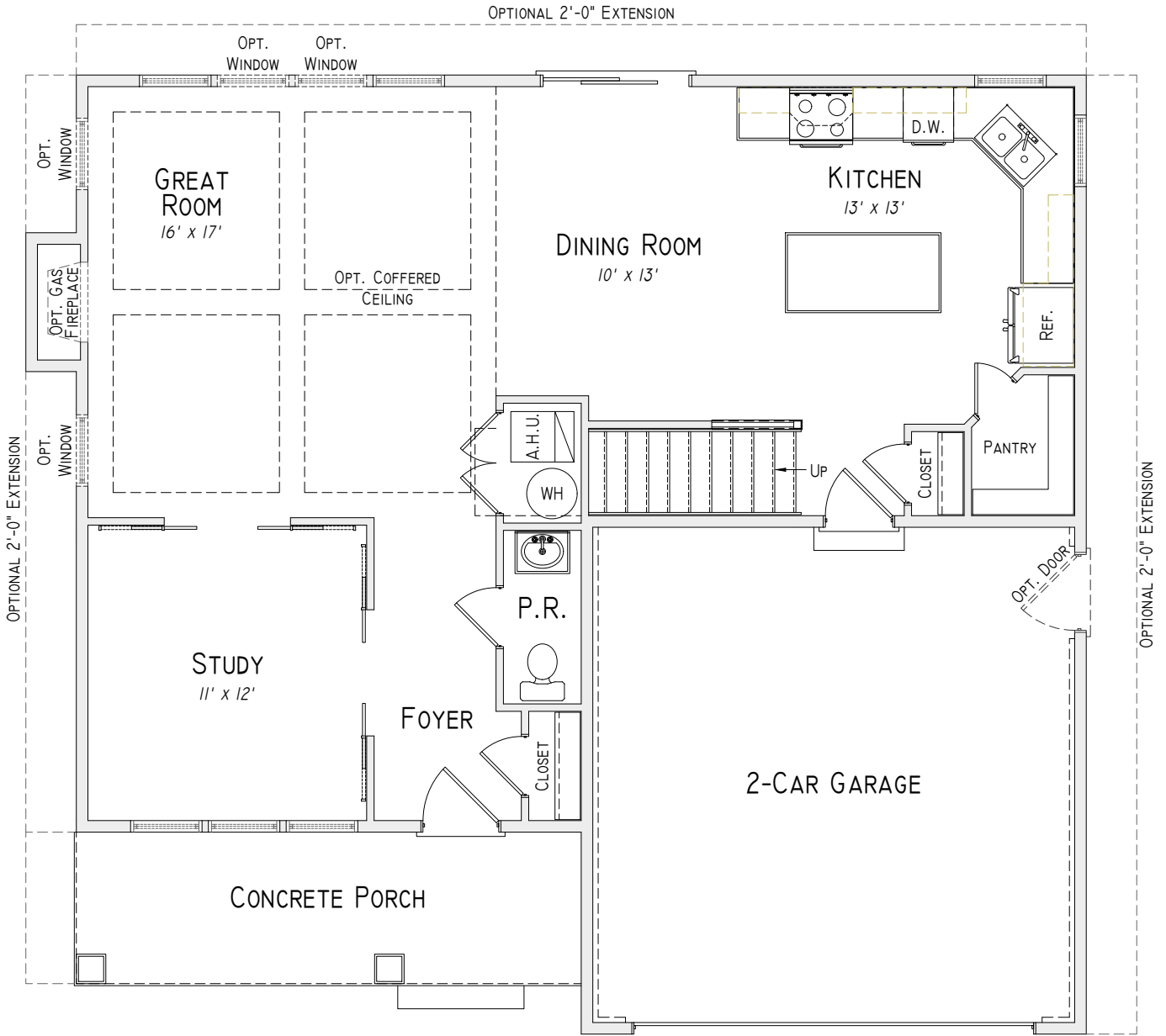
*Four Bedroom, 2 ½-Bath, 2-Car Garage
(Shown w/ Optional Stone to Grade)*

2025-2-9

GreenspringHomes.net



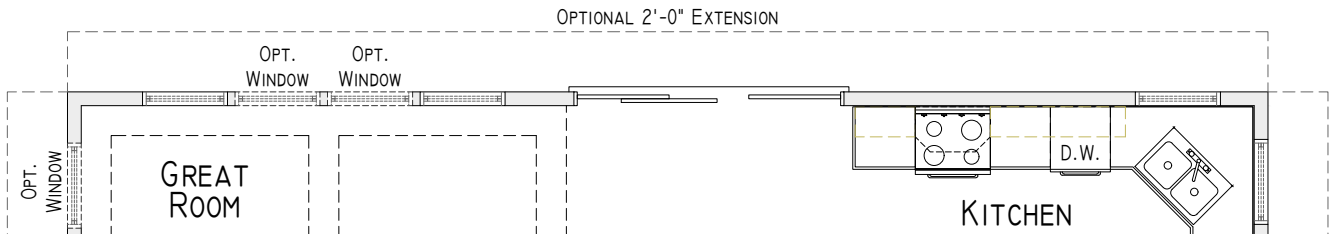
MHBR #6375



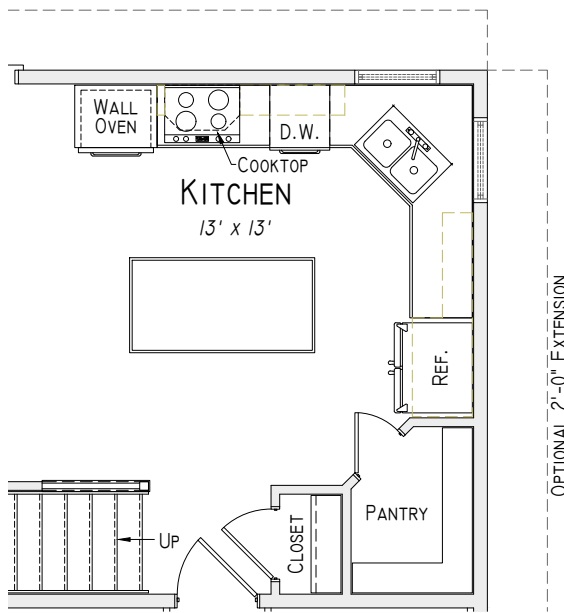
First Floor Plan

Details and dimensions shown on the floor plans are approximate, not to scale and subject to change. Illustrations are artist concepts and may vary in detail from floor plans and specifications.

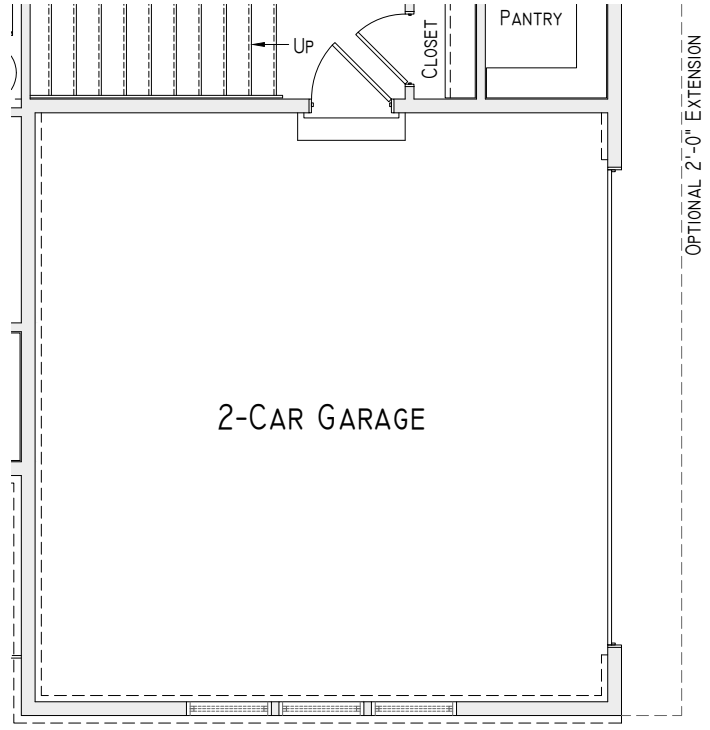




First Floor Plan w/ Optional 9'-0" Triple Panel Sliding Glass Door



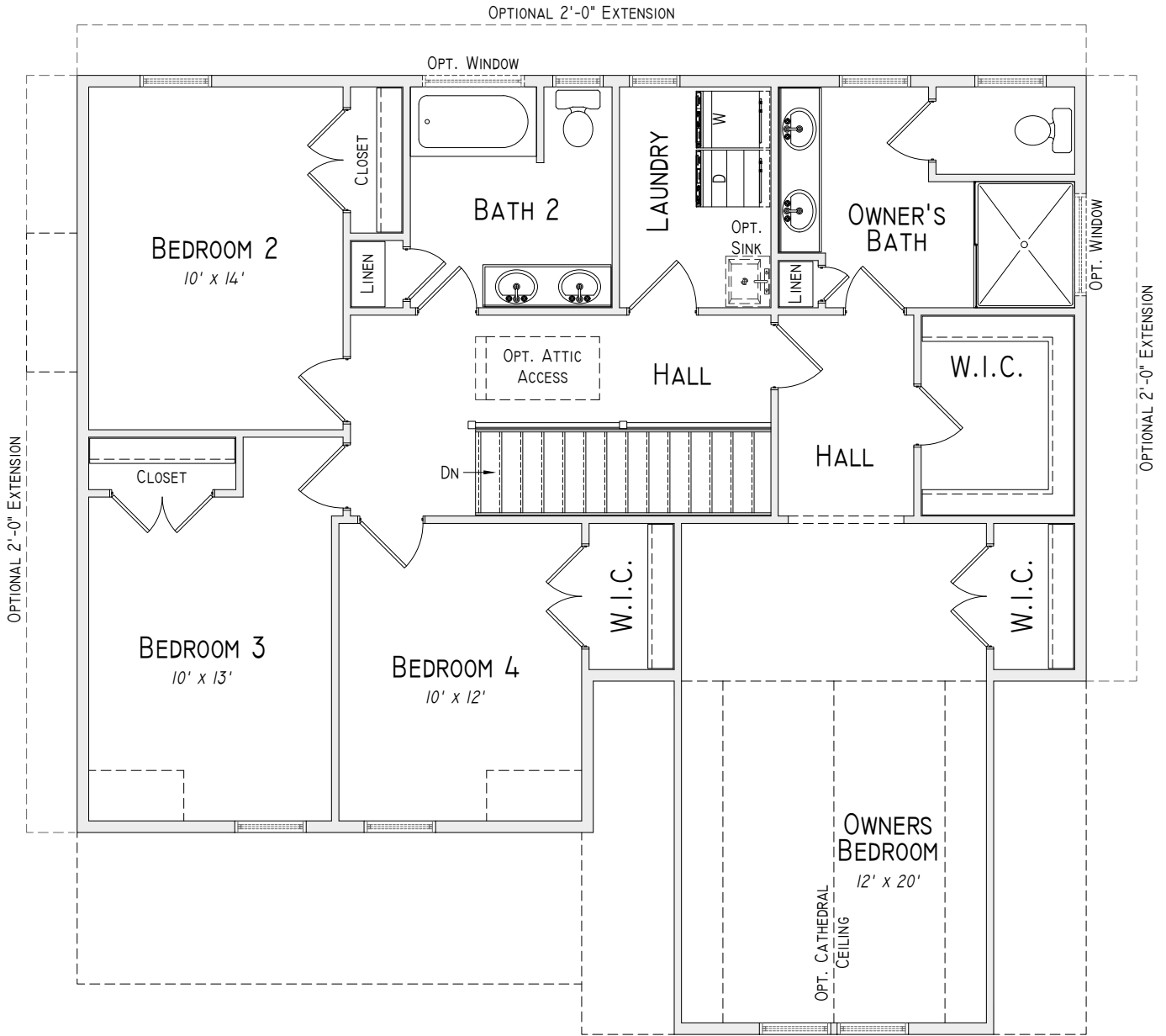
First Floor Plan w/ Optional Gourmet Kitchen



First Floor Plan w/ Optional Side Load Garage

Details and dimensions shown on the floor plans are approximate, not to scale and subject to change. Illustrations are artist concepts and may vary in detail from floor plans and specifications.

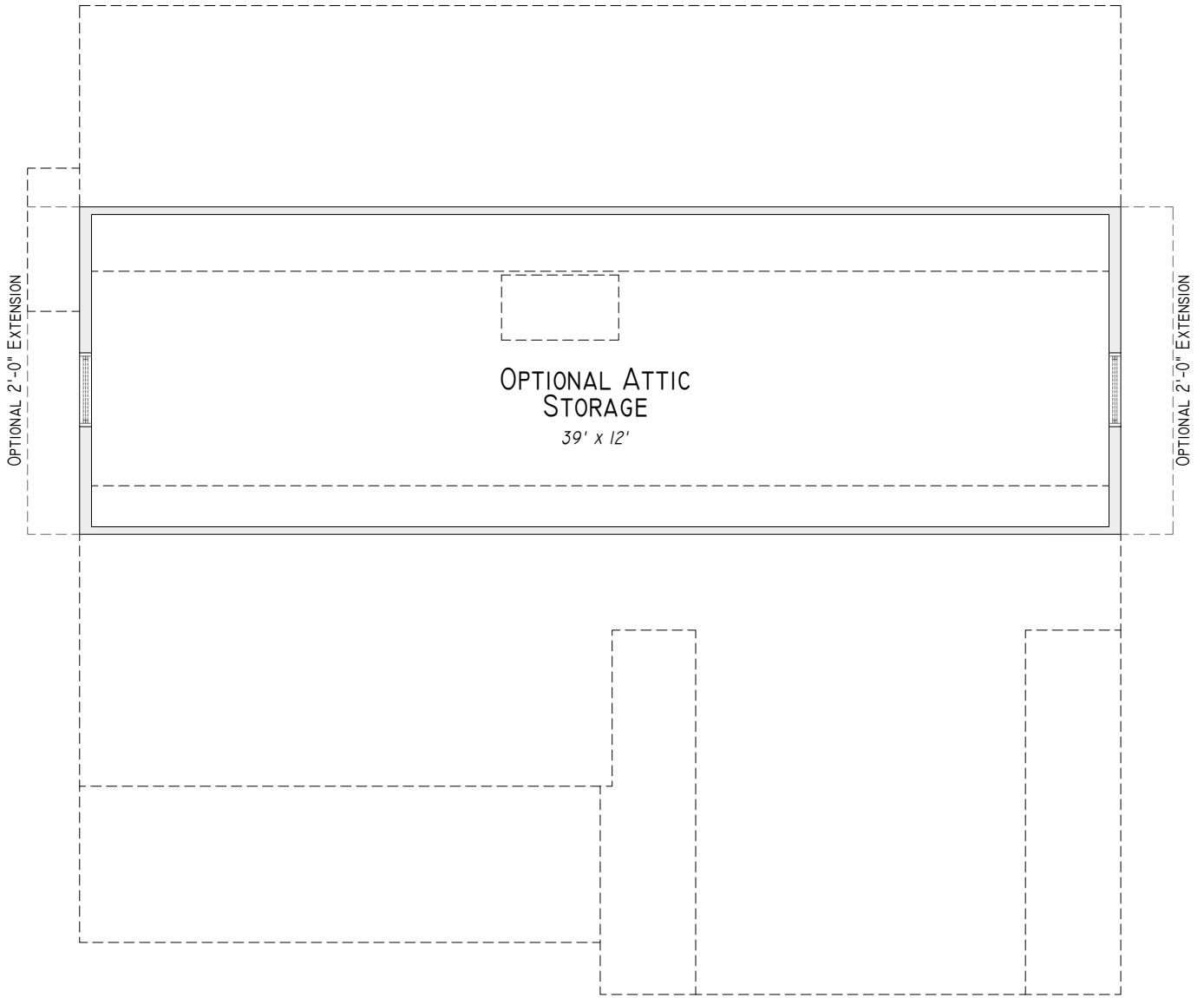




Second Floor Plan

Details and dimensions shown on the floor plans are approximate, not to scale and subject to change. Illustrations are artist concepts and may vary in detail from floor plans and specifications.





OPTIONAL ATTIC
STORAGE
39' x 12'

OPTIONAL 2'-0" EXTENSION

OPTIONAL 2'-0" EXTENSION

Optional Attic Storage Floor Plan

Details and dimensions shown on the floor plans are approximate, not to scale and subject to change. Illustrations are artist concepts and may vary in detail from floor plans and specifications.

